

# Economic Impact

## Pennsylvania Energy Development

**322K**

Pa. jobs supported by the natural gas and oil industry (PwC, 2017)

**\$3.7B**

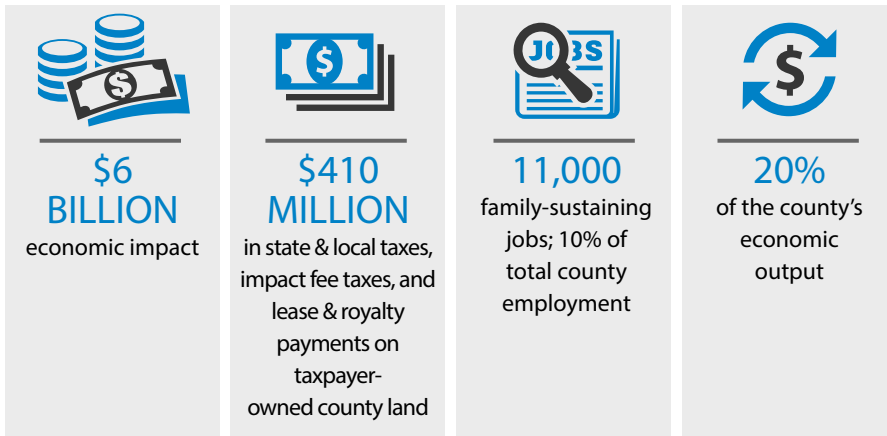
in manufacturing investment opportunity tied to Pa. natural gas liquids production (IHS, 2017)

**40%**

average reduction in residential natural gas cost (UPenn, 2017)

## Key Washington County Highlights

Washington & Jefferson College's Center for Energy Policy and Management study found that the oil & gas industry had a \$6 billion economic impact in Washington County, Range's core operating area, from 2011-2013.



## Royalties & Payments

Since 2006, Range has paid more than \$2 billion in leasing and royalty payments across Pennsylvania. The majority of those dollars, totaling \$1.5 billion, were distributed to lessors in Washington County.



A significant amount of those dollars have been directly paid to local governments.

Between 2003-2014, Washington County received nearly \$40 million from county-owned properties that have been leased, including Cross Creek County Park, where Range has drilled more than 30 wells.

Washington County used the funds to build a new boat launch and recreation area, multiple playgrounds and a new walking trail in the park.

## Pennsylvania Impact Fee & Taxes

Pennsylvania has received more than \$1.2 billion in impact fees from the natural gas industry over the past six years. Specifically, Range paid more toward the impact fee than any other operator in the last three years and nearly \$150 million in total fees since 2011.

The impact fee dollars directly benefit areas with the most shale development activity. Washington County has received more than \$32 million since 2011. Some county municipalities have received more than \$500,000 a year in impact fee dollars largely due to Range's local activity.

## Top Recipient Counties for 2016

